



TK International
020 7794 8700
www.t-k.co.uk

Residential Sales
Residential Lettings
Property Management

Sales Office:
9 Heath Street
Hampstead
London NW3 6TP
E: sales@t-k.co.uk

Lettings Office:
16-18 Heath Street
Hampstead
London NW3 6TE
E: lettings@t-k.co.uk

tk.international
TK International
TK International

Est.
1998



Church Row Hampstead Village NW3

A brand newly refurbished three bedroom, two bathroom apartment spanning close to 1,600 sq ft situated on the lower ground floor of this attractive and highly sought after mansion block.

The apartment has been tastefully refurbished to include walnut wood flooring and luxury fittings throughout. The accommodation comprises wonderful living/entertaining space, which includes a double reception/dining room and a separate modern kitchen, plus a 22'8" principal bedroom with en suite shower room, two further bedrooms, a family bathroom, guest w.c, and also a private patio which is accessible directly from the living room.

Church Row is enviably located in the centre of vibrant Hampstead (Northern Line), just moments from the many popular boutiques, cafés, restaurants and art galleries.

£1,750,000

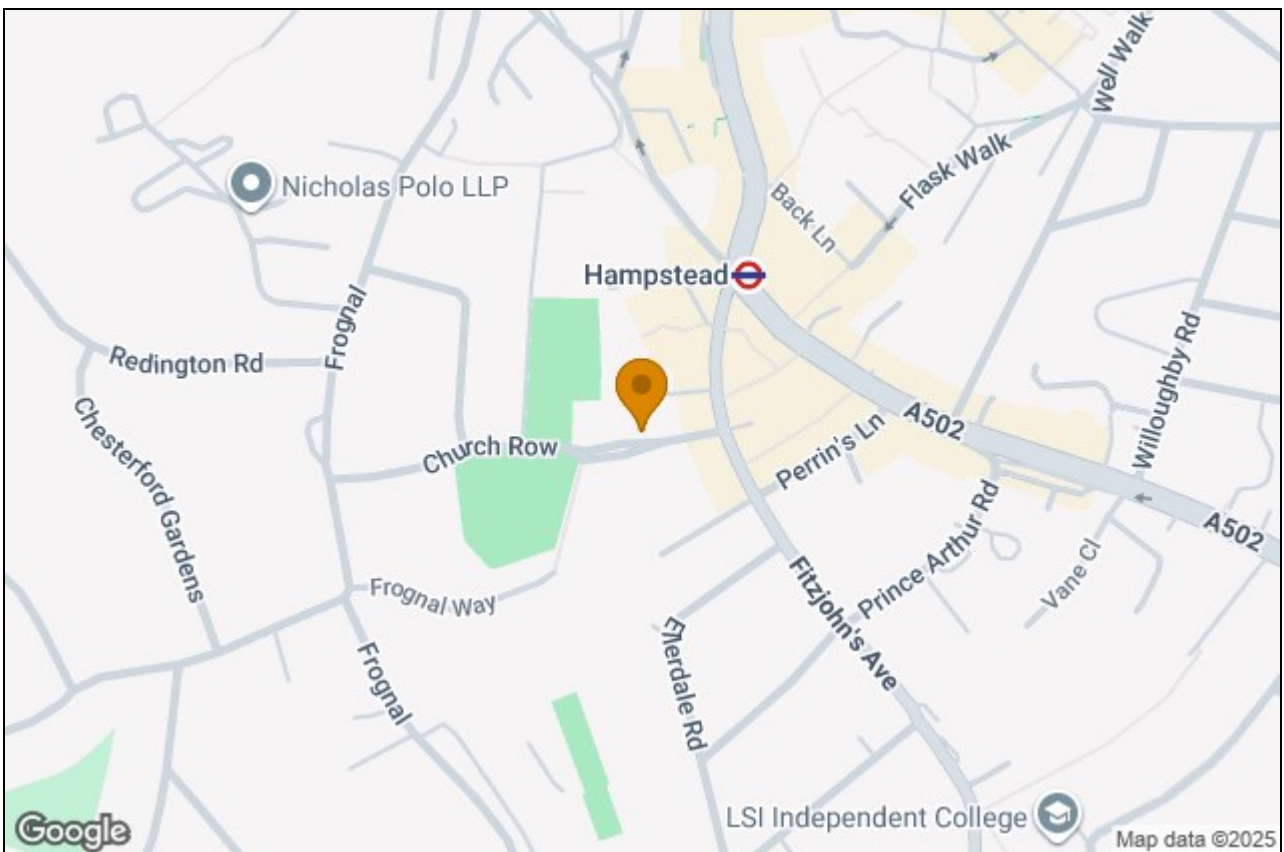
Leasehold



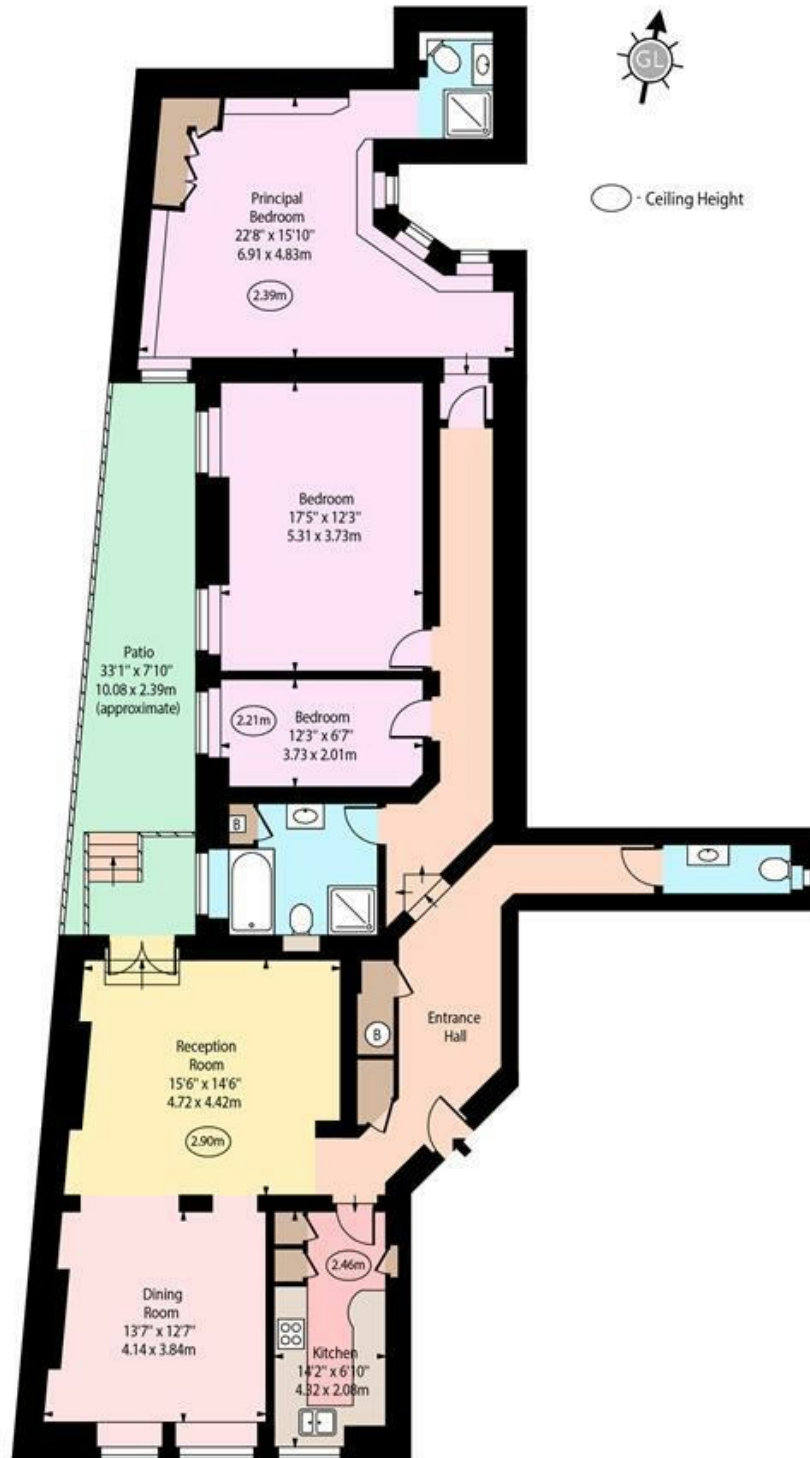








Gardnor Mansions,
Church Row,
Hampstead, NW3



Lower Ground Floor

Approx Gross Internal Area 1595 Sq Ft - 148.18 Sq M

Every attempt has been made to ensure the accuracy of the floor plan shown.
However, all measurements, fixtures, fittings, and data shown are approximate interpretations and
for illustrative purposes only. Measured according to the RICS. Not To Scale.

www.goldlens.co.uk
Prepared for TK International
Ref. No. 028862E